



SUN SENSOR SERIES

Fine & Coarse Sun Sensors

FSS-15

Flight Heritage Since Jan. 2022

FSS-15D

with Higher Update Rate



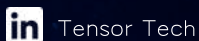
FSS-15M

with integrated Magnetometer

Flight Heritage Since Jan. 2022

Contact

Telephone +886 2 2931 9383
Inquiries sales@tensortech.co



Tensor Tech



Tensor Tech CO., LTD.

Address

2880 Zanker Road, Suite 103,
San Jose, CA 95134, U.S.A.

10F, No. 33, Chengtion Rd., Tucheng Dist., New
Taipei City 236039, Taiwan (R.O.C)



together we go further






tensortech.co

Coarse Sun Sensor Specifications

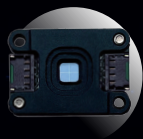


CSS-10

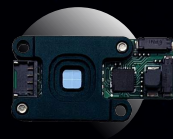
Field of View (FOV)	60 deg, half-angle
Power Consumption	< 0.1 mA
Mechanical (mm)	15 x 7 x 6 (< 0.5 g)
Radiation Tolerance	> 10 krad

-  1-axis analog coarse sun sensor
-  < 5 deg (1-sigma) of sun determination accuracy
-  Hardware protection from short circuit system failures
-  Six coarse sun sensors can provide a full sky (4π) FOV coverage (± 60 deg for each sensor)
-  Three pins for Vcc, GND and analog output

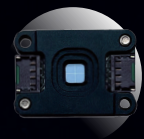
Fine Sun Sensor Specifications



FSS-15



FSS-15M



FSS-15D

	FSS-15	FSS-15M	FSS-15D
Field of View (FOV)	60 deg, half-angle	60 deg, half-angle	60 deg, half-angle
Accuracy	< 0.3 deg, RMS	< 0.3 deg, RMS	< 2 deg, RMS
Sampling Rate	4, 8, 16 Hz	4, 8, 16 Hz	4, 8, 16, 32 Hz.
Current Consumption (ACTIVE)	< 5.5 mA	< 5.6 mA	< 5.5 mA
Radiation Tolerance	> 10 krad	> 10 krad	> 10 krad
Input Voltage	3.3 V	3.3 V	3.3 V
Interface	I ² C or UART	I ² C or UART	I ² C or UART
Dimension (mm)	22 x 15 x 5.3	30 x 15 x 9	22 x 15 x 5.3
Tri-Axis Magnetometer		Range: ± 800 uT, Noise: 15 nT, RMS	

FSS-30

FSS-30M

FSS-30D

	FSS-30	FSS-30M	FSS-30D
Field of View (FOV)	60 deg, half-angle	60 deg, half-angle	60 deg, half-angle
Accuracy	< 0.1 deg, RMS	< 0.1 deg, RMS	< 0.3 deg, RMS
Sampling Rate	oneshot measurement or < 16 hz continous measurement	oneshot measurement or < 16 hz continous measurement	oneshot measurement or < 32 hz continous measurement
Current Consumption (ACTIVE)	< 30 mA @ 5 V Input	< 40 mA @ 5 V Input	< 30 mA @ 5 V Input
Radiation Tolerance	> 25 krad	> 25 krad	> 25 krad
Input Voltage	5 ~ 48 V	5 ~ 48 V	5 ~ 48 V
Interface	RS485 or CAN	RS485 or CAN	RS485 or CAN
Dimension (mm)	30 x 30 x 20	40 x 30 x 20	30 x 30 x 20
Tri-Axis Magnetometer		Range: ± 800 uT, Noise: 15 nT, RMS	

together we go further

tensortech.co